

UK & Ireland Representative

**MASTER
ABRASIVES**

Phone: 01327 703813
Email: sales@master-abrasives.co.uk
www.master-abrasives.co.uk

INNOVATIVE AUTOMATION PRODUCTS



Catalog IAP SPC v4 Software



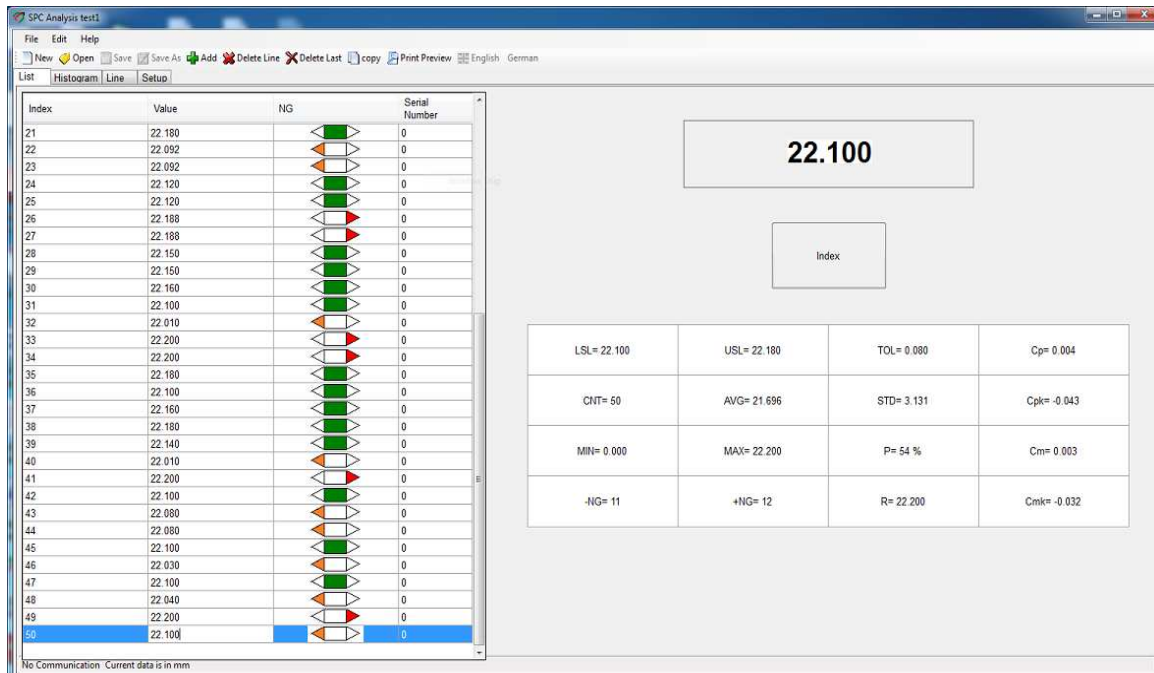
SPC analysis software for AGC Series.

Hardware requirements

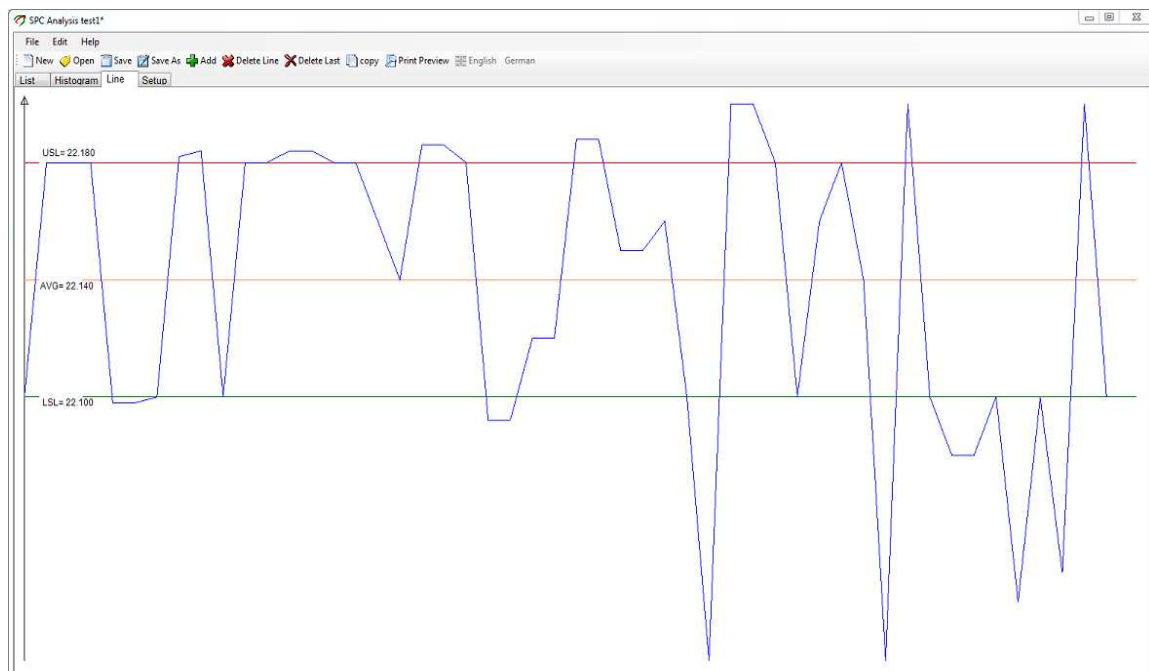
PC with Windows XP SP2
Windows 7- 32 / 64 bit
Windows8 / 8.1
With minimum 1GB RAM

MAIN SCREEN

- Online SPC Analysis with parameters such as CP, CPK, CM, CMK, Average, Standard deviation, Range, +NG, -NG etc.
- Tabulated data shown for all measurements with GO, NOGO indication.



LINE GRAPH

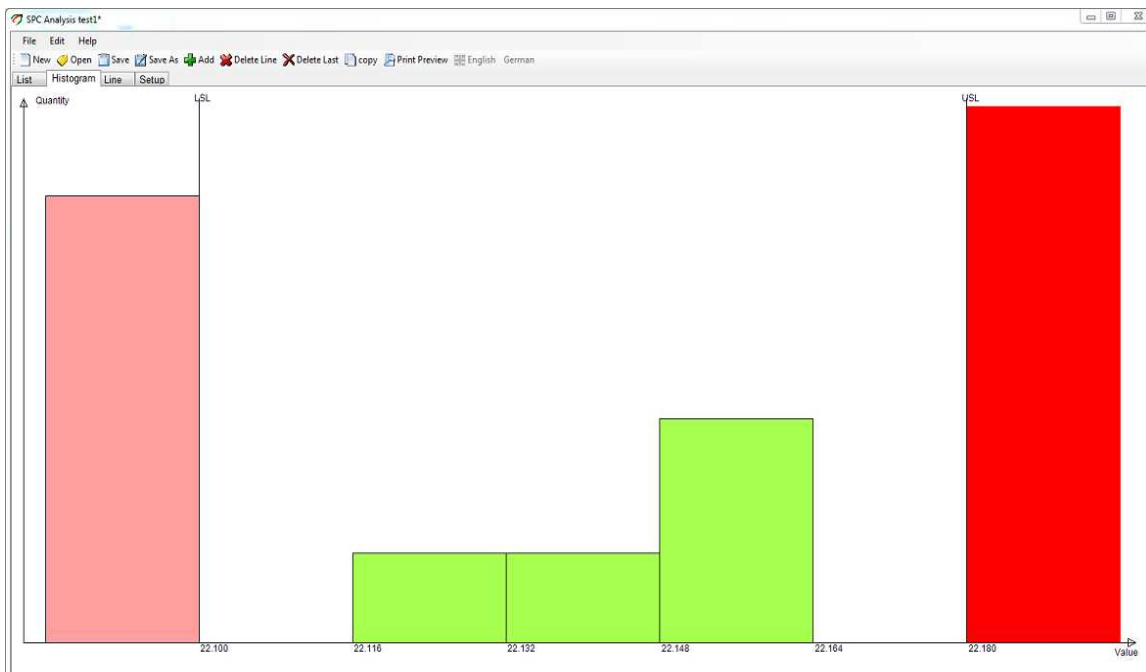


SETUP MODE

The screenshot shows the 'Setup' mode of the SPC Analysis test1* software. The interface is divided into several sections:

- Data setup:** Port (Com4), Digits (3), Multiplier (1).
- Print setup:** Part Name (Part 1), Part Number (No. 1234), Operation Desc, Operator Name (A B C), Machine (M 1), Gauge Name, and a checked 'print include list' option.
- Unit:** Radio buttons for 'inch' and 'mm' (selected).
- Color:** Two color selection boxes. The first is for 'Line' with options for USL (red), LSL (green), AVG (orange), and Values (blue). The second is for 'Histogram' with options for USL (red), LSL (pink), and Groups (green).
- Statistical setup:** LSL (22.1), USL (22.18), and Groups (5).
- Language Selection:** A dropdown menu set to 'English' and an 'Ok' button.
- Serial No:** A checkbox for 'Save Serial Num to File'.
- Select Range:** Radio buttons for 'All' (selected) and 'Selected', with 'From' (11) and 'To' (20) input fields.

HISTOGRAM



REPORT FORMATS

1) 22.100	18) 22.140	35) 22.180
2) 22.180	19) 22.188	36) 22.100
3) 22.180	20) 22.188	37) 22.160
4) 22.180	21) 22.180	38) 22.180
5) 22.098	22) 22.092	39) 22.140
6) 22.098	23) 22.092	40) 22.010
7) 22.100	24) 22.120	41) 22.200
8) 22.182	25) 22.120	42) 22.100
9) 22.184	26) 22.188	43) 22.080
10) 22.100	27) 22.188	44) 22.080
11) 22.180	28) 22.160	45) 22.100
12) 22.180	29) 22.160	46) 22.030
13) 22.184	30) 22.160	47) 22.100
14) 22.184	31) 22.100	48) 22.040
15) 22.180	32) 22.010	49) 22.200
16) 22.180	33) 22.200	50) 22.100
17) 22.160	34) 22.200	

Page 2

www.innovatedra.com

